



Research Article

PHYSICO CHEMICAL ANALYSIS AND HPTLC EVALUATION OF *KOKILAKSHADI KWATHA CHURNA*

Saranya Bhadran^{1*}, T.V. Sreeni²

¹MD Scholar, ²Professor, Department of Rasasastra & Bhaishajya Kalpana, Government Ayurveda College, Thiruvananthapuram, Kerala, India.

Article info

Article History:

Received: 18-09-2022

Revised: 06-10-2022

Accepted: 12-10-2022

KEYWORDS:

HPTLC, Physico chemical analysis, *Kokilakshadi Kwatha Churna*, *Vatarakta*, Hyperuricemia.

ABSTRACT

Kokilakshadi Kashaya mentioned in *Bhaishajya Ratnavali*, *Vataraktadhikara*, it is a therapeutic formulation to treat *Vatarakta*. It is also used by Ayurvedic practitioners for treating hyperuricemia. The symptoms of hyperuricemia and gouty arthritis are similar to *Vatarakta*, a disease explained in classical Ayurvedic textbooks. *Kokilakshadikwatha* contains *Kokilaksha* and *Guduchi* and *Pippalichurna* given as *Anupana* of this formulation Physico chemical analysis of individual drug and formulation with modern parameters increase their scope and acceptance. The study was based on standard analytical parameters proposed by API. **Method:** *Kokilakshadi Kwatha* powder was evaluated for physico chemical analysis and phyto chemical screening. The analysis was done by using the parameters like Organoleptic features, loss on drying, acid soluble extractive, water soluble extractive. **Results:** Analytical parameters of individual drugs were done. All analytical parameter were within limit. Analytical parameter of *Kokilakshadi Kwatha Churna* like loss on drying 10.4%w/w, acid insoluble ash 0.79%, alcohol soluble extractive 11.2%w/w, water soluble extractive 7.8%w/w, pH 5.78 were obtained. High Performance Thin Layer Chromatography (HPTLC) profile of *Kokilakshadikwatha* powder showed 13 peaks at 254nm and 14 peaks at 366nm. Preliminary phytochemical screening test revealed the presence of steroids, alkaloids, phenols, flavonoids. **Conclusion:** The obtained data can be used for future comparative references.

INTRODUCTION

Vatarakta is one of the important diseases described in Ayurvedic literature like *Carakasamhitha*, *Astangahridaya*, *Susrutha samhitha*. It is also called *Vatasonita*, *Vatabalasa*, *Adyavata*, *Khuda*. It is caused by the vitiation of *Vata* and *Rakta*. Pain of *Vatarakta* can be correlate to rat bite in Ayurveda^[1]. It indicates the severity of pain of the disease. So *Vatarakta* is a painful condition which affects small joints of feet and hands. On the basis of etiology and symptoms, *Vatarakta* can be correlated to hyperuricemia associated with gouty arthritis, as the pain usually starts from the big toe and spreads to the other parts of the body.

Raktamokshana, *Vasthi*, *Virechanam*, *Vamana*, *Upanaha* etc are given for the treatment of *Vatarakta* and *Guduchi* is best for curing *Vatarakta*.

Despite the fact that modern science has enhanced procedures for disease detection, diagnosis, and therapy, there is still a lack of solutions for numerous chronic and difficult-to-treat diseases. Gout medications now on the market can relieve pain and reduce inflammation to some extent. As a result, finding alternative therapy options is critical. Plant-based therapy is gaining popularity in the contemporary context for gout prevention and treatment^[2].

Available data regarding scientific evaluation of *Kokilakshadi kwatha churna* is none. The status of a medicine can be determined by looking at its identity, purity, content, and other chemical, physical, or biological characteristics, as well as by the manufacturing procedures. The benefit of using HPTLC for analytical testing of herbal goods is that it aids in both quantitative and qualitative analysis using the

Access this article online

Quick Response Code



<https://doi.org/10.47070/ijapr.v10i10.2570>

Published by Mahadev Publications (Regd.)
publication licensed under a Creative
Commons Attribution-NonCommercial-
ShareAlike 4.0 International (CC BY-NC-SA 4.0)

same technology and enables positive identification as well as visualisation of the separated fractions of the sample component. So, current study is anticipated to evaluate *Kokilakshadikwatha* powder through physico-chemical and HPTLC analysis.

AIM

To evaluate the *Kokilakshadikwatha churna* as per pharmacopeial (Ayurvedic Formulary of India and Ayurvedic Pharmacopeia of India) method. To evaluate the quality of drug.

MATERIALS AND METHODS

Collection and Preparation of the Drug

Kokilaksha and *Pippali* collected from local market and authenticated from Department of Dravyagunavijnana, Government Ayurveda college, Thiruvananthapuram. *Guduchi* was collected freshly from the dealer who collecting it from nearby sources. Fresh stem of *Guduchi* was microscopically analyzed in the Department of *Dravyagunavijnana* Government Ayurveda College, Thiruvananthapuram. Then powder microscopy of *Guduchi* stem was also done at Pharmacognasy unit Poojappura. Ingredients of *Kokilakshadi Kwatha Churna* are summarized at [Table 1].

Table 1: Ingredients of *Kokilakshadi Kwatha* (Fig 1)

Drug	Latin Name	Part used
<i>Guduchi</i>	<i>Tinospora cordifolia</i>	Stem
<i>Kokilaksha</i>	<i>Astercantha longifolia</i>	Whole plant
<i>Pippali</i>	<i>Piper longum</i>	Fruit



Fig 1: a. *Kokilaksha* b. *Guduchi* c. *Pippali*

Pharmacognosy of *Guduchi* (Fig 2)

Powder microscopy of *Guduchi* was done in order to confirm the identity of given species. It was done in Pharmacognosy Unit, Government Ayurveda College, Poojappura.

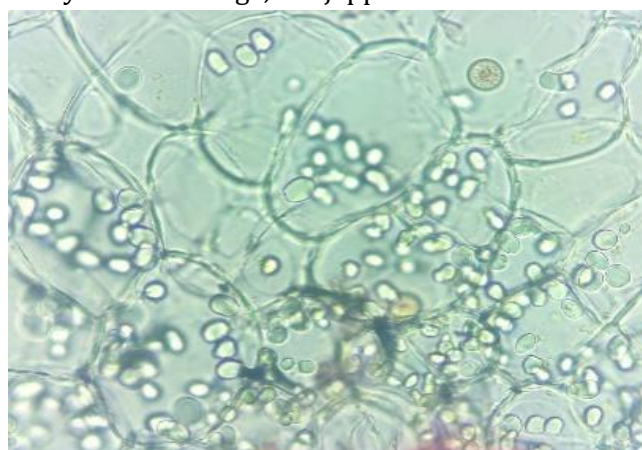


Fig 2: Powder microscopy of *guduchi* stem

Preparation of *Kokilakshadi kwatha churna*

Fresh *Guduchi* stem was taken and cleaned well. Peeled of the skin by using knife and scrubber. Then cut into small pieces of about 3cm length. Peeled of *Guduchi* stem were washed well and dried in steel trays. The drug *Kokilaksha* was taken and cut into small pieces by using knife. Then washed thoroughly

and dried well in sunlight in steel trays. Properly dried pieces of *Guduchi* and *Kokilaksha* were crushed in mixer grinder separately and pass through sieve no.22 size (As per API). Then equal quantity of drugs were taken and mixed well and kept in air tight container.

Assessment of Identity, purity & strength of Raw drugs.

It includes foreign matter, total ash, acid-insoluble ash, alcohol-soluble extractive, water-soluble extractive.

Test parameters of Kokilakshadi Kashaya Churna

Organoleptic evaluation of *Kokilakshadi Kwatha Churna* like colour, odour etc. Physico chemical parameters like pH, loss on drying at 105°C, total ash, acid-insoluble ash, alcohol-soluble extractive, water-

soluble extractive. Phyto chemical parameter like HPTLC and qualitative parameters.

OBSERVATIONS AND RESULTS**Identity, Purity, Strength of Individual Drugs**

IPS of individual drugs were tested and compared with the values given in API. Foreign matter [3], total ash, acid insoluble ash, alcohol soluble extractive, water soluble extractives were recorded. [Table 2]

Table 2: Identity, Purity, Strength

IPS	<i>Kokilaksha</i>	<i>Guduchi</i>	<i>Pippali</i>
Foreign matter	0.367%	1.6%	0.372%
Total Ash	5.6%	5.2%	5.52%
Acid insoluble ash	0.39%	2.6%	2.75%
Alcohol soluble extractive	6.97%	3.4%	5.6%
Water soluble extractive	22.64%	13.4%	16.78%

Organoleptic evaluation of Kokilakshadi Kwatha Churna**Table 3: Organoleptic features**

No	Features	<i>Kokilakshadi Kwatha Churna</i>
1	Colour	Greenish
2	Odour	Characteristic smell
3	Taste	Bitter
4	Consistency	Powder

Physico-chemical Analysis

Physico-chemical analyses were carried out by following the parameters like pH value^[4] loss on drying at 110°C^[5], acid insoluble ash, water soluble extractive^[6], alcohol soluble extractive^[7] were recorded.

Table 4: Physico-chemical analysis of Kokilakshadi Kwatha Churna

Physico-chemical analysis	<i>Kokilakshadikwatha Churna</i>
pH	5.78
Loss on drying	10.4%
Acid insoluble ash	0.79%
Alcohol soluble extractive	11.2%
Water soluble extractive	7.8%

Qualitative Analysis of Kokilakshadi Kwatha

It is used for identification of different plant constituents in the extractives

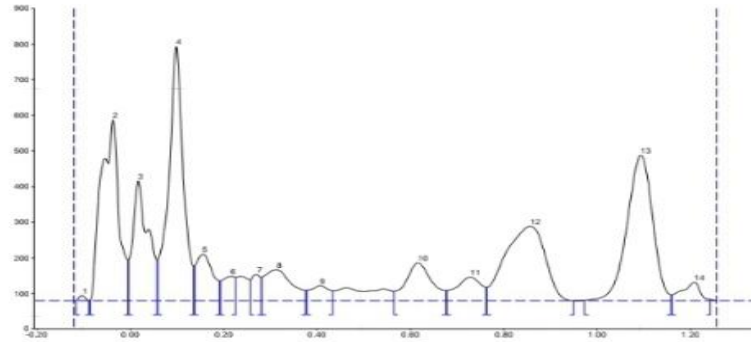
Table 5: Phytochemical screening of Kokilakshadi Kwatha

Phytochemical constituents	<i>Kashaya</i>
Steroids	Present
Alkaloids	Present
Phenols	Present
Flavanoids	Present

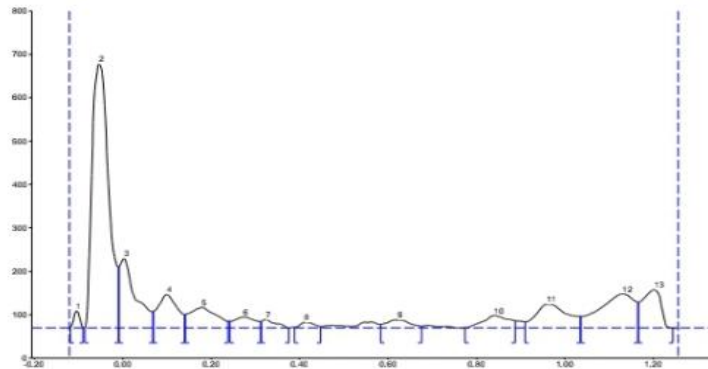
Phytochemical Analysis**HPTLC of Kokilakshadikwatha churna**

High Performance Thin Layer Chromatography (HPTLC) In HPTLC, in short UV-254nm, maximum 13 spots were observed in *Kokilakshadi Kwatha*; while in long UV-366nm, maximum 14 spots were observed. [Table 6] [Fig 3] [Fig 4].

Fig 3

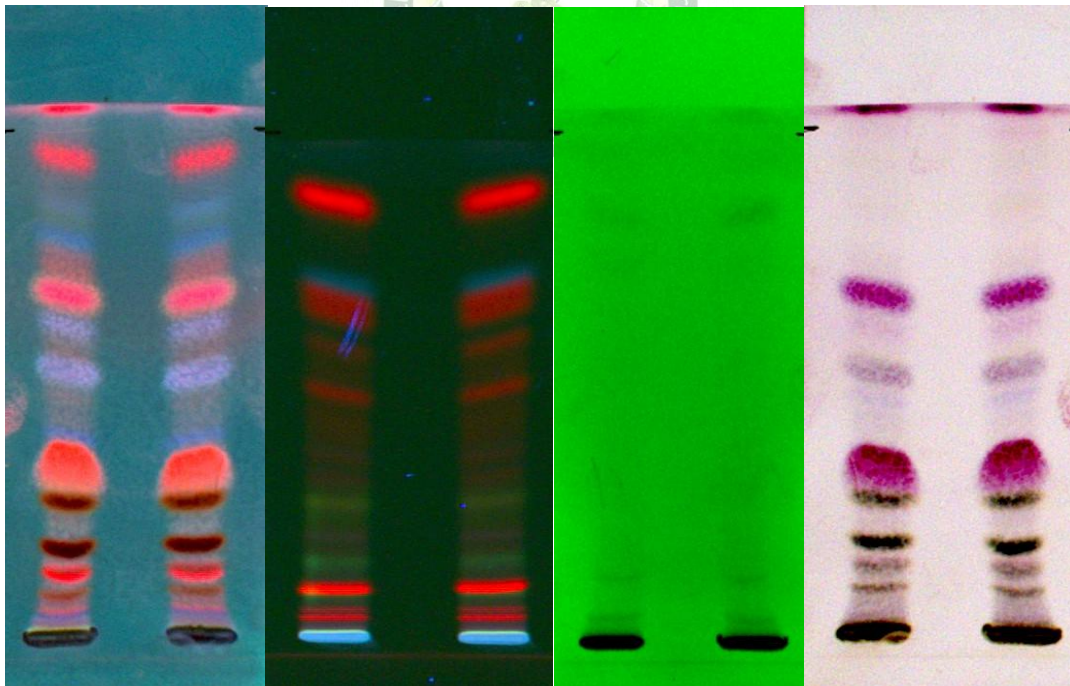


(a) Chromatographic results (Peak display) of *Kokilakshadi Kwatha Churna* at Short ultra violet (254 nm)



(b) Chromatographic results (Peak display) of *Kokilakshadi kwatha churna* at Long ultra violet (366nm)

Fig 4



a) at 366nm b) at 366nm c) at 254 nm d) at visible light

Table 6: Chromatographic results of *Kokilakshadi Kwatha Churna*

Conditions	Rf values
Short ultra violet (254nm)	-0.11, -0.05, 0.00, 0.10, 0.18, 0.27, 0.32, 0.41, 0.62, 0.84, 0.96, 1.13, 1.21
Long ultra violet (366nm)	-0.10, -0.04, 0.02, 0.10, 0.16, 0.22, 0.27, 0.31, 0.41, 0.62, 0.73, 0.86, 1.09, 1.21

DISCUSSION

Identity, purity, strength of all raw materials were tested and compared with API parameters. All the values like foreign matter, total ash, acid insoluble ash, water soluble extractive, alcohol soluble extractives were tested. All of them were satisfying the API values. It denotes drug were taken for the study, i.e., *Guduchi, Kokilaksha, Pippali* was of genuine sample without any adulteration. The pH of *Kokilakshadi Kashaya* is 5.78, i.e., slightly acidic. So there is less chance of gastric irritation. Loss on drying of *Kokilakshadi Kwatha Churna* was 10.4% which indicate the moisture content of the given sample. It is also important in determining the shelf life of a drug. LOD of *Kokilakshadi Kwatha Churna* was higher than that of other *Kwatha Churna* mentioned in API part II vol 4. This may be due to the moisture absorbing nature of drug. Acid insoluble ash indicates the presence of silica in the sample. Acid insoluble ash obtained for *Kokilakshadi Kwatha Churna* was 0.79%. Alcohol soluble extractive represents the alcohol soluble extractive in the sample. Alcohol soluble extractive for the value for the *Kwatha Churna* was 11.2% Water soluble extractive indicates the percentage of water soluble substances present in the sample. Water soluble extractive of *Kwatha Churna* was 7.6%. HPTLC of *Kokilakshadi Kwatha Churna* using solvent system toluene, chloroform, methanol in the ratio of 8:3:1.13 peaks obtained at 254nm and 14 peaks obtained at 366nm. The Rf values of major bands indicate the presence of compounds in the sample. More compound obtained at 366nm.

CONCLUSION

Physico chemical parameter and HPTLC profile of *Kokilakshadi Kwatha Churna* was developed.

ACKNOWLEDGEMENT

Department of Rasasastra and Bhaishajya kalpana, Government Ayurveda College Thiruvananthapuram, Drug standardisation unit, Government Ayurveda College, Thiruvananthapuram.

REFERENCES

1. Sreekantha Murthy. Astanga Hridaya vol.II (Nidanasthana). Varanasi; Chaukhambha Krishnadas Academy; 2010. p160
2. Lack of association between diary fructose and hyperuricemia risk in adults. [cited 2020 March 3]. Available from: <https://www.researchgate.net>
3. Dept of AYUSH. The Ayurvedic Pharmacopoeia of India. 1sted. Ministry of Health and Family welfare. Govt. of India, New Delhi; Part 1.Vol IV.159p
4. Dept of AYUSH. The Ayurvedic Pharmacopoeia of India. 1sted. Ministry of Health and Family welfare. Govt of India, New Delhi; Part 1.Vol IV.159p
5. Dept of AYUSH. The Ayurvedic Pharmacopoeia of India. 1st ed. Ministry of Health and Family welfare. Govt of India, New Delhi; Part 1. Vol IV. 160p
6. Dept of AYUSH. The Ayurvedic Pharmacopoeia of India. 1sted. Ministry of Health and Family welfare. Govt of India, New Delhi; Part 1.Vol IV. 160p
7. Dept of AYUSH. The Ayurvedic Pharmacopoeia of India. 1sted. Ministry of Health and Family welfare. Govt of India, New Delhi; Part 1. Vol IV. 160p

Cite this article as:

Saranya Bhadran, T.V. Sreeni. Physico Chemical Analysis and HPTLC Evaluation of Kokilakshadi Kwatha Churna. International Journal of Ayurveda and Pharma Research. 2022;10(10):57-61.

<https://doi.org/10.47070/ijapr.v10i10.2570>

Source of support: Nil, Conflict of interest: None Declared

*Address for correspondence

Dr. Saranya Bhadran

MD Scholar,
Department of Rasasastra &
Bhaishajya Kalpana,
Government Ayurveda College,
Thiruvananthapuram, Kerala, India.
Email:

saranyabhadran02@gmail.com

Disclaimer: IJAPR is solely owned by Mahadev Publications - dedicated to publish quality research, while every effort has been taken to verify the accuracy of the content published in our Journal. IJAPR cannot accept any responsibility or liability for the articles content which are published. The views expressed in articles by our contributing authors are not necessarily those of IJAPR editor or editorial board members.